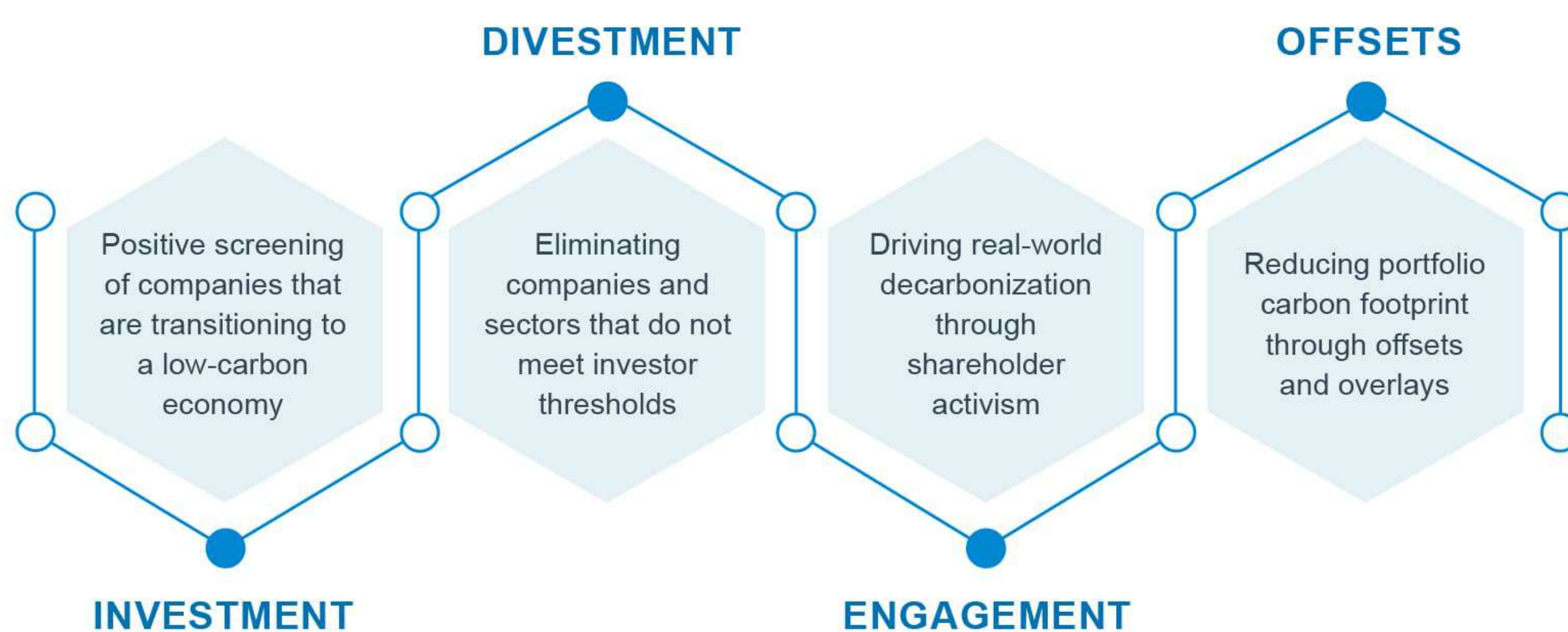


TRANSITIONING TO NET ZERO

Institutional investors and asset managers face complex challenges when considering how to best decarbonize portfolios and set Net Zero strategies.

- How do we align with stakeholders on a definition of Net Zero?
- What data and analytics do we incorporate to make informed decisions?
- What are the considerations for setting portfolio emissions targets?
- How do we integrate Net Zero into our broader ESG efforts?
- How do we balance our climate-related investment goals with our fiduciary responsibilities?

Determining Your Optimal Net Zero Approach



There is no one-size-fits-all approach to determining the right path to Net Zero. A clear, pragmatic approach focusing on a single or combination of strategies must be aligned to your unique goals, operating constraints, and stakeholder preferences. This is essential to delivering financial returns and mitigating risk.

FFI Solutions has been facilitating portfolio decarbonization since 2013

OUR COMPANY

FFI Solutions is a climate-focused research, analytics and advisory firm that delivers custom solutions to decarbonize portfolios and implement Net Zero strategies.

From our globally recognized The Carbon Underground 200™ data and energy transition research, to strategic consulting, we work collaboratively with you, deploying our robust capabilities in:

- Data, Research and Analytics
- Portfolio Decarbonization
- Net Zero Advisory

OUR NET ZERO INTEGRATION FRAMEWORK

Designed for asset owners and asset managers, our flexible Net Zero framework facilitates and simplifies the complex integration process – from assessing and diagnosing portfolios to defining and implementing bespoke strategies.

- Education, Assessments and Insights
- Level Setting and Alignment
- Net Zero Strategy / Setting Goals and Targets
- Implementing Strategies
- Ongoing Communication and Monitoring



Our Products and Services



DATA, RESEARCH AND ANALYTICS

Our in-depth energy sector-focused research, rankings and analytics provide critical inputs and insights into sustainable investment products, purpose-driven strategies, and broader ESG integration approaches.

- Carbon Underground Data Universe covering all publicly traded fossil fuel owners globally
- Net Zero Transition Data
- Bespoke Carbon and Transition Research



PORTFOLIO DECARBONIZATION

Our range of portfolio solutions enable targeted implementation of fossil free and Net Zero aligned mandates, analyses, approaches and strategies.

- Portfolio Screening:
 - Transition-Aligned Investment
 - Selective Divestment
 - Informed Engagement
- Carbon Footprint and Diagnostics
- Carbon Offset Program Design
- Investment Product Validation
- Investment Strategy and Index Design



NET ZERO ADVISORY

Our collaborative results-oriented advisory services help navigate the complexities of Net Zero investing and are centered on achieving key outcomes such as:

- Consensus on goals, beliefs, and operating constraints
- Ambitious and achievable targets supported by stakeholders
- Implementation roadmap with clear milestones
- Plan to monitor and communicate to key stakeholders and constituents

Our Core Products

THE CARBON UNDERGROUND 200

Our rankings of the top global 200 publicly owned coal, oil, and gas reserve owners have served as the operational fossil free standard since 2014. With more than \$10 billion in assets screened, the Carbon Underground 200™ underpins investor mandates and sustainable investment products.

Net Zero Transition DataSet

Our rich, sector-focused Net Zero Transition DataSet, with more than 100 indicators, helps investors evaluate and track how fossil fuel companies are preparing for the transition to a low-carbon economy. In addition, we use this DataSet to create custom scoring methodologies for our clients.



Our pioneering FFI Energy Transition Long-Short-US Index captures the potential upside of the transition to a low-carbon economy. It has been designed to reflect the global structural shift from an economy powered by fossil fuels to one focused on clean energy.